



PTRX-7300MK2 INSTALLATION GUIDE

DISCLAIMER: We are not responsible for any damage to your radio during installation. Please operate at your own risk.

You can access the latest version of this document at www.radiospectral.com/ptrx-7300mk2

This document has been prepared to help you to install PTRX-7300MK2 into your ICOM IC-7300MK2 radio. This is a solderless operation, therefore this installation does not require any equipment other than a JIS screwdriver, and you can remove PTRX-7300MK2 from your radio at any time easily.

Recommended screw driver : Stanley #2 x 4 in. Phillips Screwdriver.

<https://www.homedepot.com/p/Stanley-2-x-4-in-Phillips-Screwdriver-STHT60038/311380145>

PTRX-7300MK2 shipped with following items as shown in Figure.1:

- 1- PTRX-7300MK2.
- 2- U.FL to U.FL connector.
- 3- 4 pin external tuner cable extension (to be connected to J331).
- 4- U.FL to U.FL extension.
- 5- MCX-U.FL cable (to be connected to J1431).
- 6- MCX to SMA cable.



Figure.1: PTRX-7300MK2 package content.

Installation Procedure

WARNING: This is an ESD sensitive operation, and requires proper grounding.

- 1- Remove all connectors (including antenna), to power IC-7300MK2 off completely.
- 2- Open the top cover of the ICOM IC-7300MK2 with the recommended screw driver carefully.
- 3- Plug item 3 (4 pins external tuner cable extension) to PTRX-7300MK2 as in Figure.2.
- 4- Remove MOLEX/JST connector (in Figure.3) from your ICOM IC-7300MK2.
- 5- Place PTRX-7300MK2 into the external tuner opening.
- 6- Plug item 3 (4 pins external tuner cable extension) to J331 as shown in Figure.5.
- 7- Peel off the sticker cover of the item.2 (U.FL to U.FL connector), place to the chassis and attach U.FL cables as shown in the Figure.4.
- 8- Plug item.5 (MCX to U.FL cable) into J1431, and attach the MCX socket into the MCX port of PTRX-7300MK2.
- 9- Plug item.6 (MCX to SMA cable) and external tuner cable into the RF/Tuner output of PTRX-7300MK2.

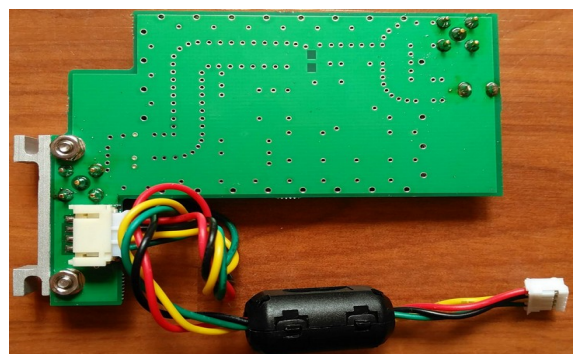


Figure.2 : 4 pin tuner cable installation.



Figure.3 : MOLEX/JST external tuner cable.

- 10- Turn on your radio, and connect the SMA cable to your SDR receiver. Make sure LED indicator of PTRX-7300MK2 is on. Once you test with your SDR receiver, you can close the top cover.
- 11- You are all set. Enjoy your PTRX-7300MK2 panadapter!



Figure.4: U.FL to U.FL connector placement.

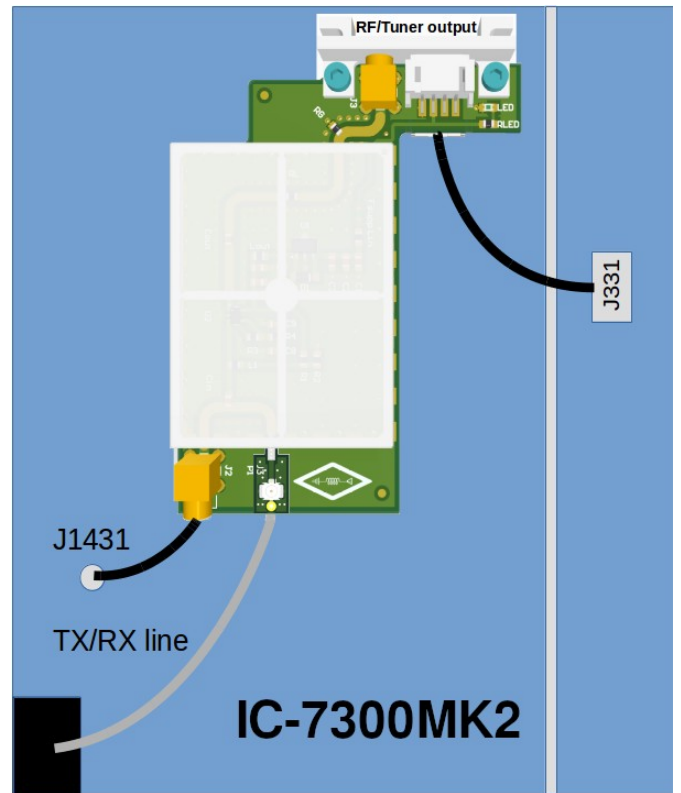


Figure.5 : PTRX-7300MK2 installation diagram.

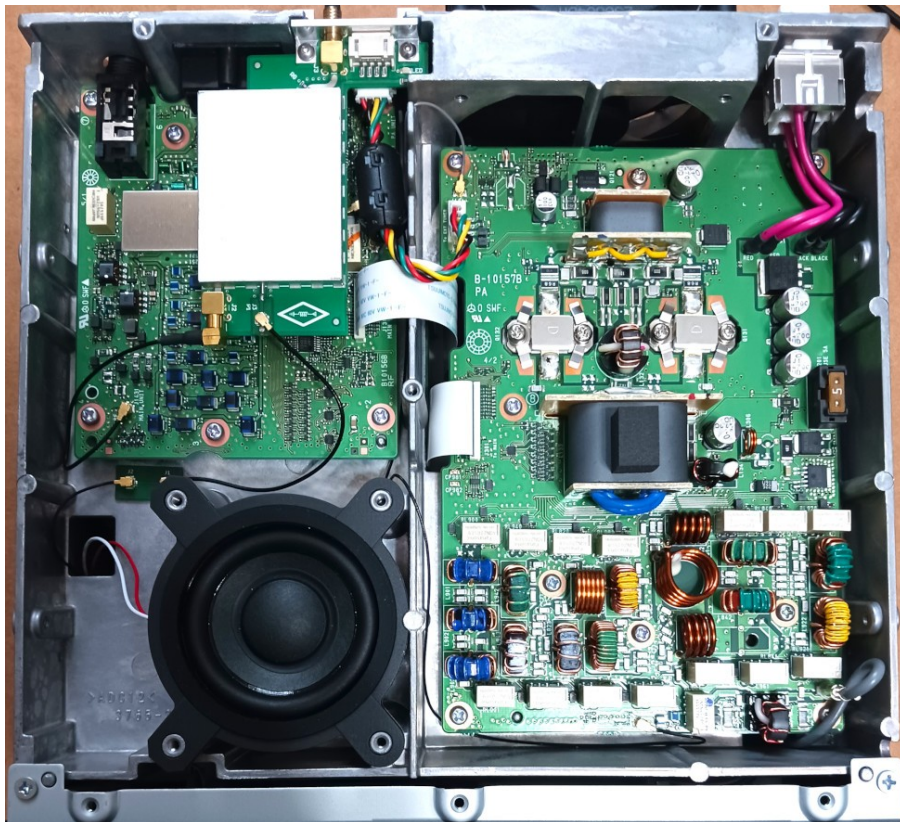


Figure.6 : Ready to use PTRX-7300MK2 installation.