



PTRX-9700 INSTALLATION GUIDE

DISCLAIMER: We are not responsible for any damage to your radio during installation. Please operate at your own risk.

You can access the latest version for this document at www.radiospectral.com/ptrx-9700

This document has been prepared to guide you to install PTRX-9700 into your ICOM IC-9700 radio. This is solderless operation, and you can remove PTRX-9700 from your radio at any time easily without any modification.

PTRX-9700 shipped with following items as shown in **Figure.1**:

- 1- PTRX-9700.
- 2- Fixture (non-conductive).
- 3- U.FL extensions.
- 4- Power cable.
- 5- Power adapter.
- 6- U.FL to SMA cable and SMA fixture.

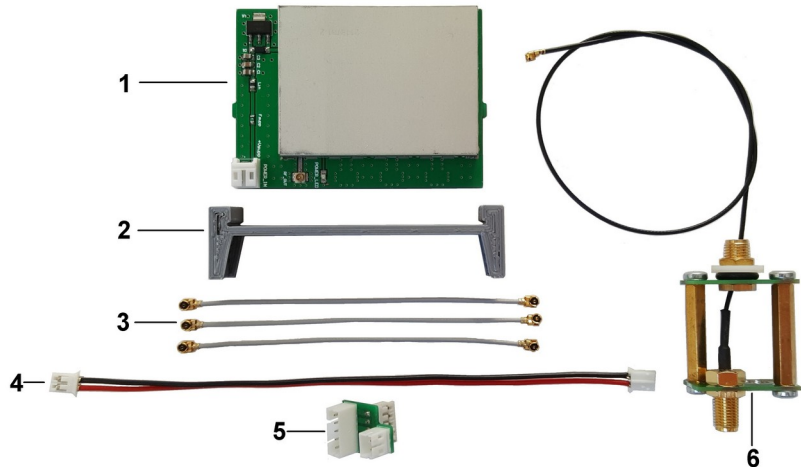


Figure.1 : PTRX-9700 product content.

Installation Procedure

Before you start, you will need an 8mm wrench to replace the SMA connector and also a phillips head screwdriver to remove the bottom cover of IC-9700.

- 1- Power off your IC-9700 and remove power cable.
- 2- Open the bottom cover of IC-9700 with a phillips head screwdriver.
- 3- Plug the power adapter as in **Figure.2**.
- 4- Detach U.FL cables from the PCB of IC-9700 then attach U.FL cables extensions to IC-9700 (VHFin, UHFIn, 23in) as shown in **Figure.3**. Do not forget to attach original U.FL cables from IC-9700 to PTRX-9700.
- 5- Replace REF_IN SMA connector with supplied adapter as shown in **Figure.4** (if you don't use REF_IN signal, you can replace the SMA connector with supplied one) as in **Figure.5**.
- 6- Push PTRX-9700 on to the aluminum holder as in **Figure.3**, then attach the power cable to PTRX-9700.
- 7- Power your IC-9700 on and check if the green LED of PTRX-9700 is on as in **Figure.6**.
- 8- Close the bottom cover. Connect your SDR receiver to the RF output of PTRX-9700.
- 9- You are all set. Enjoy your PTRX-9700 panadapter!

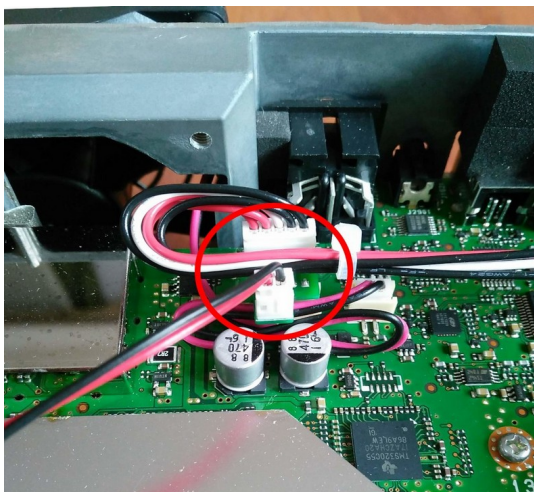


Figure.2 : Power adapter connection.



Figure.3 : Bypass cable connections.

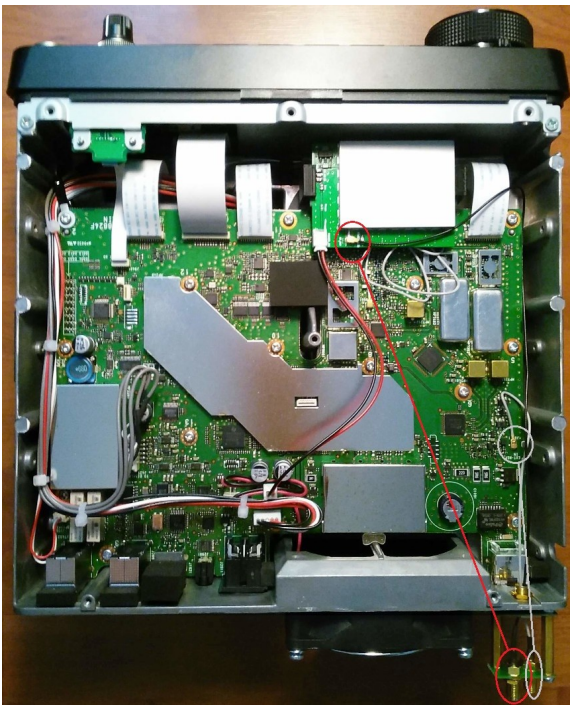


Figure.4 : RF out along with the REF clock input.

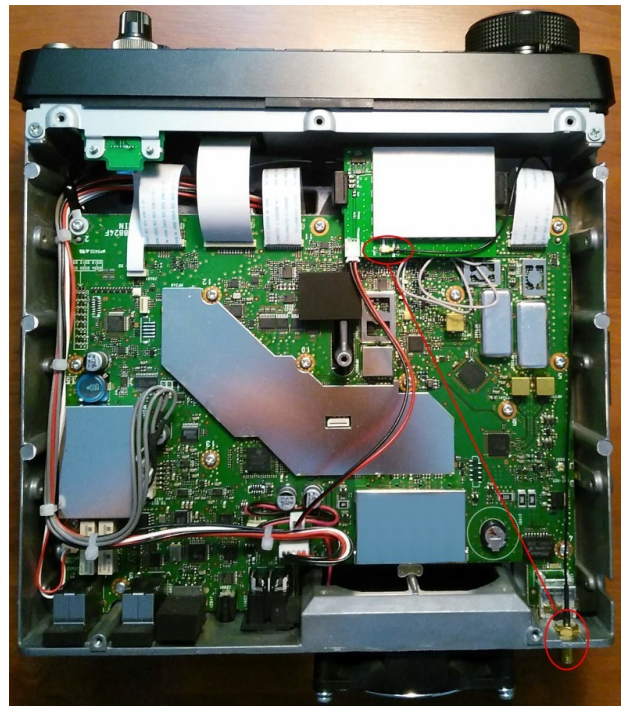


Figure.5 : Direct RF out (for users who don't use REF clock)



Figure.6 : Installed PTRX-9700 with power.

For technical assistance you can reach us at radiospectral@gmail.com